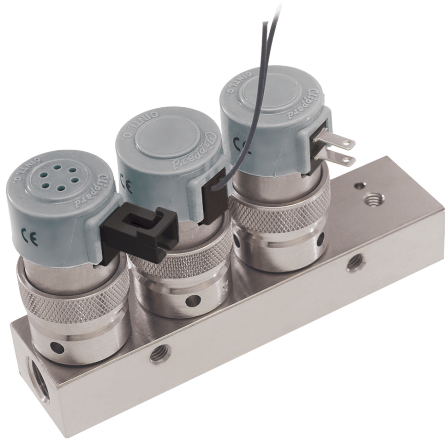
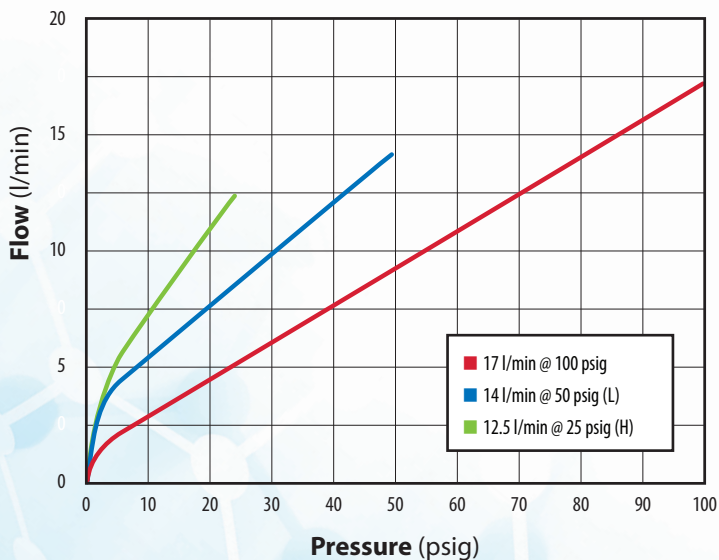


## CORROSION RESISTANT EV SERIES



For applications that are susceptible to corrosion, the EV series is available in a special corrosion resistant version. The corrosion resistant series uses the same deceptively simple spider technology as the original EV series, but all the ENP steel components are swapped out for 430 stainless steel. The stainless steel components change the electrical characteristics by increasing the power consumption but do not affect the pressure or flow performance.

**TYPICAL FLOW**



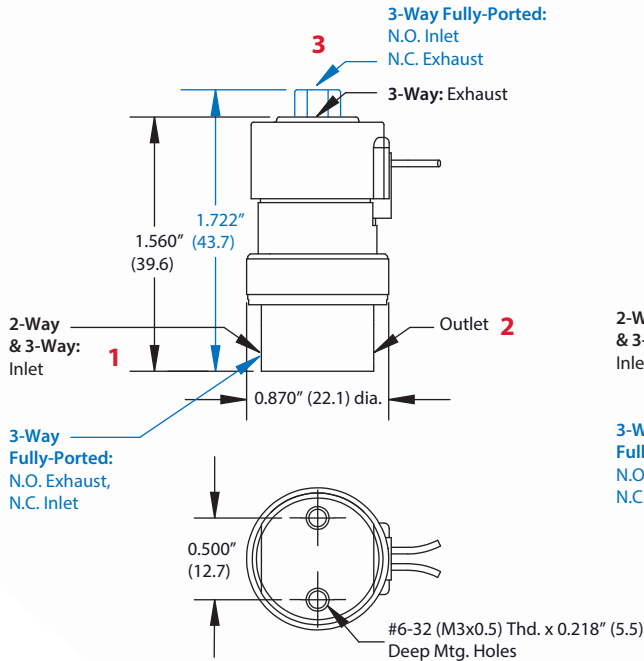
<b>Coil Resistance</b>	122 (12V), 486 (24V)
<b>Connection</b>	Pin connector, spade terminals, radial wire leads
<b>Current</b>	0.10A (12V), 0.05A (24V)
<b>Cycle Life</b>	>1,000,000,000 ( <i>ideal applications</i> )
<b>Filtration</b>	40 micron filter ( <i>recommended</i> )
<b>Function</b>	2-way normally-open or normally-closed; 3-way normally-open, normally-closed, or fully ported
<b>Leak Rate</b>	0.1 sccm
<b>Material, Body</b>	Nickel-plated brass, nickel iron alloy, 300 stainless steel, 430 stainless steel
<b>Material, Seals</b>	Nitrile standard; FKM, EPDM <sup>1</sup> and silicone <sup>1</sup> available
<b>Material, Spring</b>	ENP nickel alloy
<b>Material, Wetted</b>	ENP brass, ENP nickel alloy, 430 stainless steel
<b>Max. Flow</b>	17 l/min @ 100 psig (7 bar), 14 l/min @ 50 psig (3.4 bar), or 12.5 l/min @ 25 psig (1.7 bar)
<b>Max. psig</b>	105 (7.2 bar)
<b>Medium</b>	Clean, dry air and compatible gases
<b>Mount</b>	In-line or manifold
<b>Number of Ports</b>	2 or 3
<b>Operating Pressure</b>	25, 50, or 100 psig (7, 3.4, or 1.7 bar)
<b>Operating Range</b>	90 to 110% of rated voltage
<b>Operating Temp. Range</b>	32 to 150°F (0 to 65°C)
<b>Orifice</b>	0.060", 0.040", or 0.025" (1.52, 1.02, or 0.64 mm)
<b>Port, Exhaust</b>	#10-32 or M5
<b>Port, Inlet</b>	<b>Manifold:</b> #10-32 male or M5 <b>In-Line:</b> #10-32 female or M5
<b>Port, Outlet</b>	#10-32 or M5 (in-line)
<b>Response Time</b>	5 to 10 ms (nominal) @ 25 psig (1.7 bar)
<b>Voltage</b>	12 or 24 VDC
<b>Voltage Operating Range</b>	90 to 110%
<b>Wattage</b>	1.2 watts (nominal)
<b>More Details</b>	<a href="http://clippard.com/link/ev-series">clippard.com/link/ev-series</a>

<sup>1</sup>Minimum order quantity required

*Does your application have requirements beyond what is listed? Contact Clippard to discuss how this valve can be modified to meet your specific needs.*

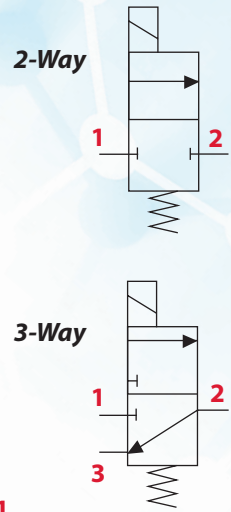
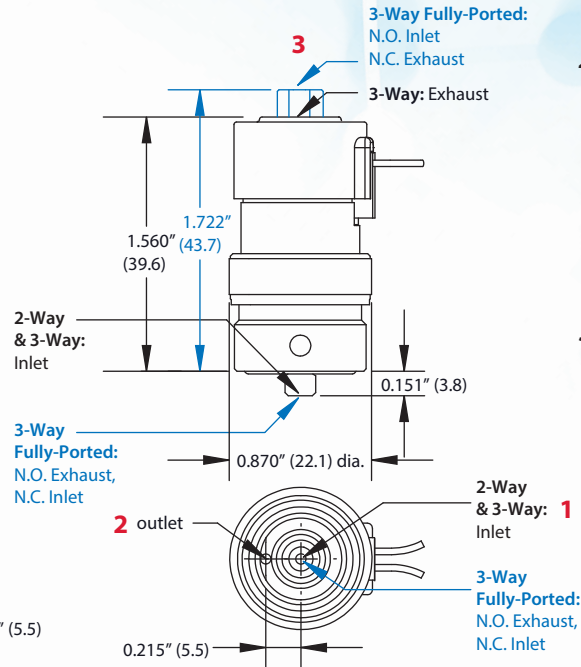
### Inline Mount

2-Way, 3-Way, and 3-Way Fully-Ported



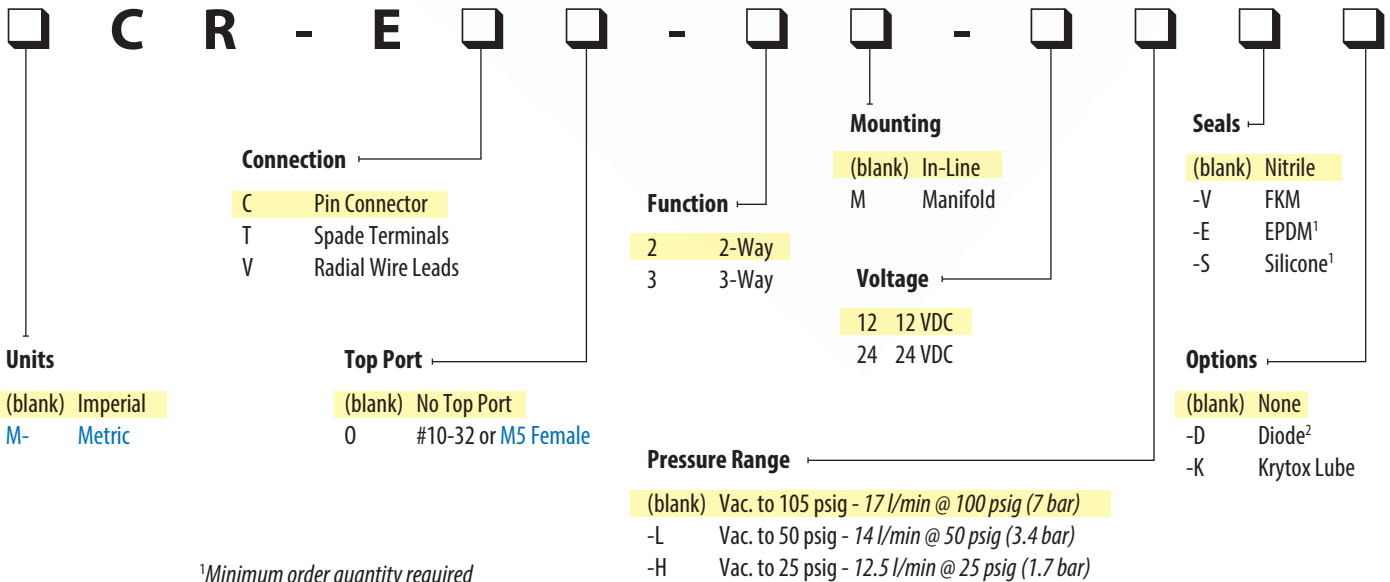
### Manifold Mount

2-Way, 3-Way, and 3-Way Fully-Ported



Dimensions shown are in inches (millimeters listed in parentheses).  
Visit [clippard.com](http://clippard.com) for more detailed 2D and 3D drawings.

## ORDERING INFORMATION



<sup>1</sup>Minimum order quantity required  
<sup>2</sup>Available on pin connector (EC) models only

**Example Part Number:**  
CR-EC-2-12

For more info, scan the QR code or visit  
[clippard.com/link/ev-series](http://clippard.com/link/ev-series)

