

Clippard

ES SERIES ELECTRONIC VALVES

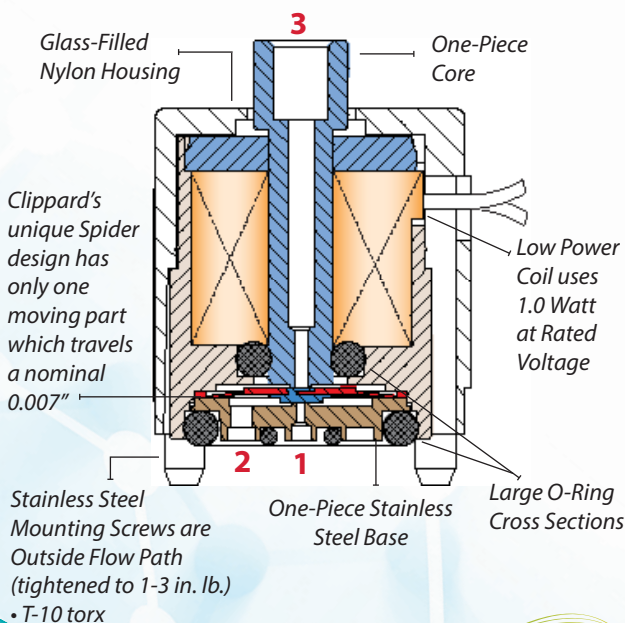


Spider technology is renowned worldwide for exceptional leak resistance and long life. Clippard developed, patented and perfected this spider technology. Ideal applications have exceeded 1,000,000,000 cycles with this technology which utilizes one moving part that travels a mere 0.007" during operation. This single moving part with a short stroke enables the ES series to operate with exceptional reliability.

The ES series features large cross sectional o-rings, minimal leak points, and proven poppet designs. All mounting hardware is outside of the flow path for the ES, and no internal parts are threaded during assembly to reduce the possibility of contamination. The ES has the best performance-to-price ratio for low leak valves.

The compact footprint coupled with the long life, and exceptional leak resistance make the ES line suited to improve reliability in a wide range of applications including biomedical, dental, test equipment, oxygen control, textile, packaging, pressure control, automation and portable systems.

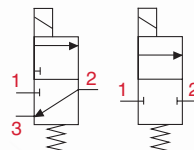
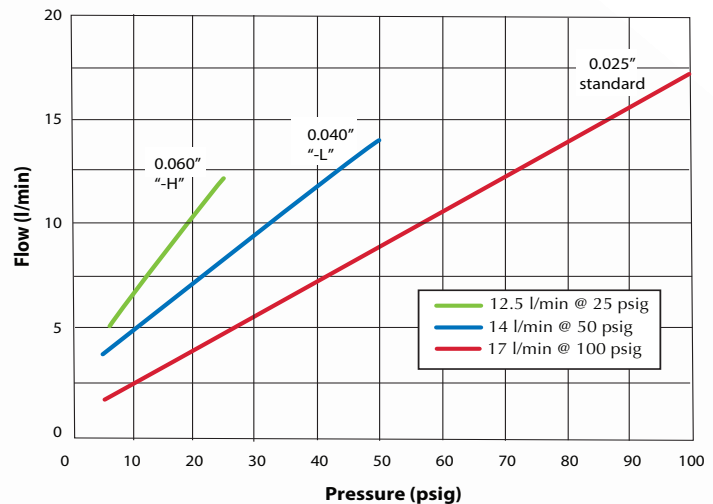
Valve Type	2-Way Bi-Directional or 3-Way Normally-Closed & Universally Ported
Ports	Inlet and outlet through manifold 3-Way: Exhaust through top of valve
Operating Pressure	28" Hg Vac to 105 psig
Voltage	6 VDC, 12 VDC or 24 VDC
Voltage Tolerance	90 to 120% of rated voltage
Wattage	1 watt at rated voltage
Temperature Range	32 to 150° F
Medium	Clean, dry air and compatible gases (40 micron filter recommended)
Material, Wetted	ENP Carbon Steel, Nickel Iron Alloy, 300 Series Stainless Steel plus Seal Material
Material, Seals	Nitrile standard; FKM and EPDM available
More Details	clippard.com/link/es



KEY FEATURES

- Over 1 billion cycles (under ideal conditions)
- 0.01 atm sccm leak rate
- No threads in flow path
- Fast response - 5 to 10 ms (nominal)
- Close mounting - 7/8" on center. Overall height less than 1"
- No anaerobic sealant
- Ideal for ultra-low leak applications

TYPICAL FLOW



ORDERING INFORMATION

Unit		Type	Function	Connection	Voltage	Orifice	Options	
(blank)	Imperial	ES-	Normally-Closed	2 2-Way	T Top Pin	-6 6 VDC	(blank) 0.025"	(blank) Nitrile Seals
M-	Metric	ESO-	Universally-Ported	3 3-Way	W Wire Leads, 18" (26 AWG)	-12 12 VDC	(105 psig max)	V Viton Seals
						-24 24 VDC	L 0.040"	E EPDM Seals
							(50 psig max)	
							H 0.060"	
							(25 psig max)	

Accessories

C3-RXR18 Wire Lead Connector, 18"

Example Part No. ES-2T-12-V

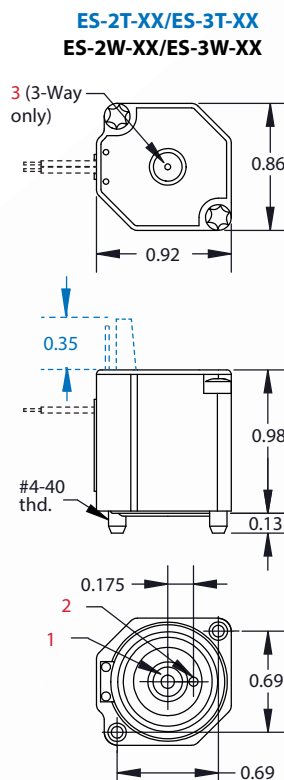
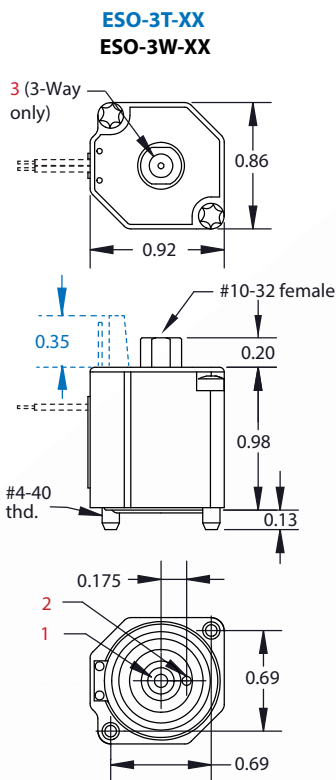
Accessories

C3-RXB18 Wire Lead Connector, 18"
(TE Connectivity #5-103956-2)

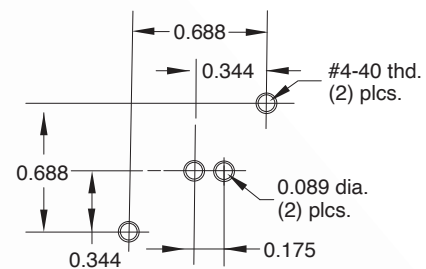
ESM-CP Cover Plate for Unused
Manifold Station

Example Part No. ES-2T-12-V

Valves



Mounting Interface



Consult Clippard for custom manifold designs.

Manifolds

For a complete offering of single- and multi-station manifolds, see clippard.com/link/es



877-245-6247 | clippard.com

CLIPPARD INSTRUMENT LABORATORY, INC. • ISO 9001 • TDS-3.22
For warranty and disclaimer information, visit clippard.com/warranty